

This floorplan is only for illustrative purposes and is not to scale. Measurements of rooms, doors, windows, and any items are approximate and no responsibility is taken for any error, omission or mis-statement. Icons of items such as bathroom suites are representations only and may not look like the real items. Made with Made Snappy 360.

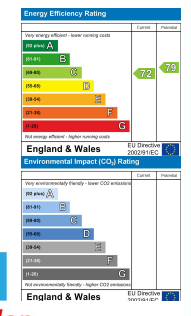


17 Chestnut Tree Drive, Johnston, Haverfordwest, Pembrokeshire, SA62 3QF

- End Terrace House
- Well Presented
- Low Maintenance Garden
- Shower Room
- Close To Amenities
- Two Bedrooms
- Conservatory To Rear
- Driveway With EV Charging Point
- Gas Central Heating
- EPC Rating: C

Offers Around £160,000

COMPUTER-LINKED OFFICES THROUGHOUT WEST WALES and Associated office in Mayfair, London



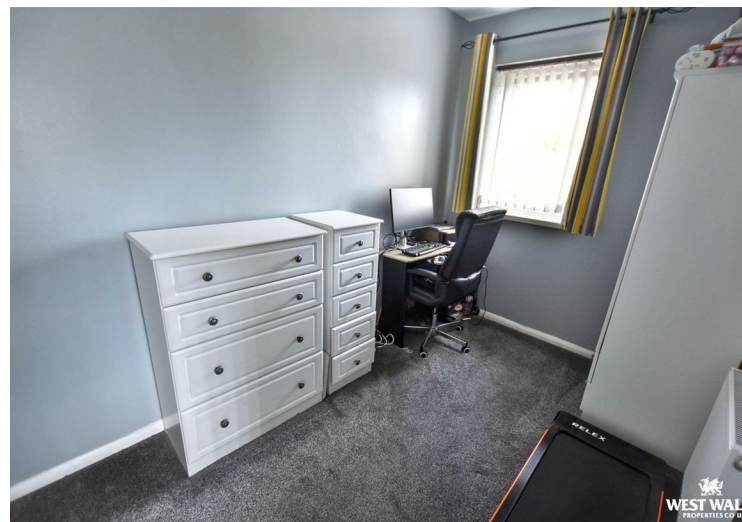
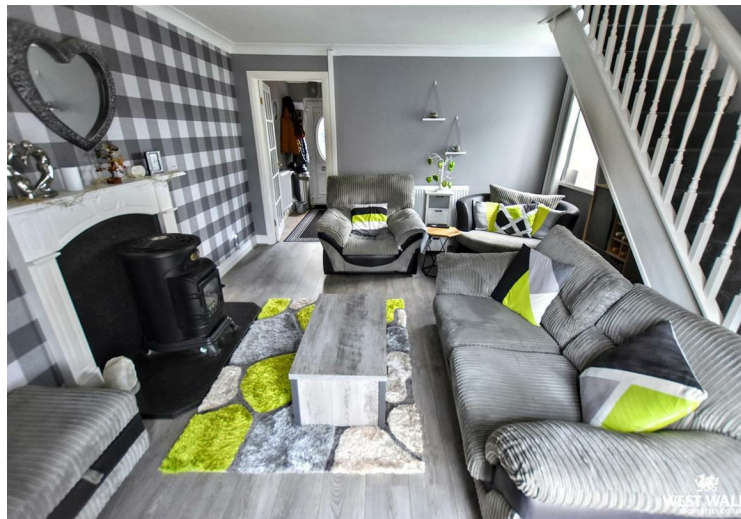
VIEWING: By appointment only via the Agents.
TENURE: Freehold
SERVICES: We have not checked or tested any of the services or appliances at the property.
Property has Mains Electric, Mains Water, Mains Drainage, Mains Gas
HEATING: Gas
TAX: Band C
We would respectfully ask you to call our office before you view this property internally or externally

JETH/ESL/05/26/DRAFT
FACEBOOK & TWITTER
Be sure to follow us on Twitter: @ WWProps
<https://www.facebook.com/westwalesproperties/>

WE WOULD LIKE TO POINT OUT THAT OUR PHOTOGRAPHS ARE TAKEN WITH A DIGITAL CAMERA WITH A WIDE ANGLE LENS. These particulars have been prepared in all good faith to give a fair overall view of the property. If there is any point which is of specific importance to you, please check with us first, particularly if travelling some distance to view the property. We would like to point out that the following items are excluded from the sale of the property: Fitted carpets, curtains and blinds, curtain rods and poles, light fittings, sheds, greenhouses - unless specifically specified in the sales particulars. Nothing in these particulars shall be deemed to be a statement that the property is in good structural condition or otherwise. Services, appliances and equipment referred to in the sales details have not been tested, and no warranty can therefore be given. Purchasers should satisfy themselves on such matters prior to purchase. Any areas, measurements or distances are given as a guide only and are not precise. Room sizes should not be relied upon for carpets and furnishings.

Details are correct at the time of listing. We have not seen sight of all building regulations or planning permissions should they be necessary,

COMPUTER-LINKED OFFICES THROUGHOUT WEST WALES and Associated office in Mayfair, London



17 Chestnut Tree Drive is a well-presented two-bedroom end-terrace home, ideally suited to first-time buyers or investors alike, conveniently located close to the amenities of Haverfordwest.

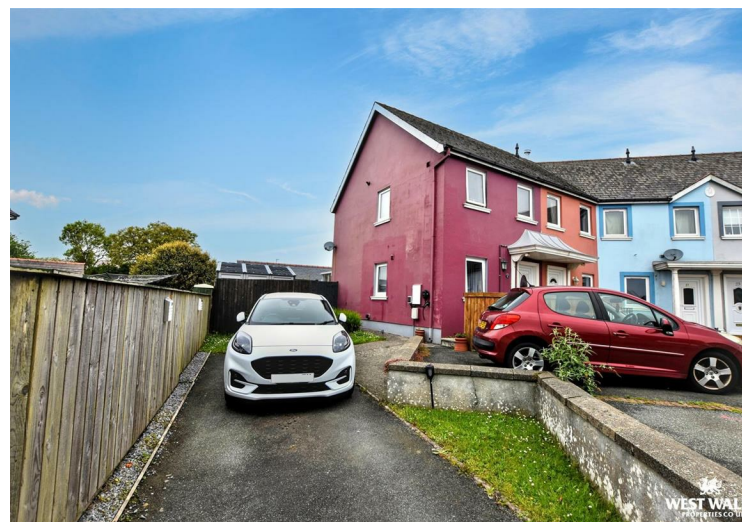
The accommodation briefly comprises an entrance hallway, fitted kitchen, a comfortable living room with French doors leading to the conservatory, two bedrooms, and a modern shower room. The property benefits from gas central heating and has been well maintained throughout, offering ready-to-move-into accommodation.



Externally, the property enjoys a driveway to the side providing off-road parking, complete with an EV charging point. Gated side access leads to the rear garden, designed for low maintenance with gravelled areas and a patio seating space, ideal for relaxing or entertaining.

A fantastic opportunity to acquire a comfortable and practical home in a convenient location. Viewing is highly recommended!

The village of Johnston is located some 3 miles south of the County Town of Haverfordwest, on the way to Milford Haven, Neyland Marina and the Cleddau Bridge, which gives access to Pembroke and South Pembrokeshire. The stunning Pembrokeshire coastline is within easy reach, with beautiful sandy beaches at Marloes Sands, Broad Haven, Freshwater East and a host of others. Haverfordwest has a wide range of amenities including Main Line Train Station, Hospital, Leisure Centre and Swimming Pool, Cinemas, Primary and Secondary Schools, Sixth Form College, Supermarkets, Retail Parks, whilst Johnston itself has a Primary School, train station, shops, doctor's surgery



DIRECTIONS

From the Haverfordwest office proceed out of town on the A4076 in the direction of Johnston. Enter the village and turn left onto Brookside Avenue and then left onto Chestnut Tree Drive where the property will be found on the right hand side. What3Words:///fearfully.plastic.deserved

See our website www.westwalesproperties.co.uk in our TV channel to view our location videos about the area.